

North Union Active Transportation Plan

Kickoff Meeting August 15, 2023

What is Active Transportation?



Active transportation is **human-powered transportation** that engages people in healthy physical activity while they travel from place to place.

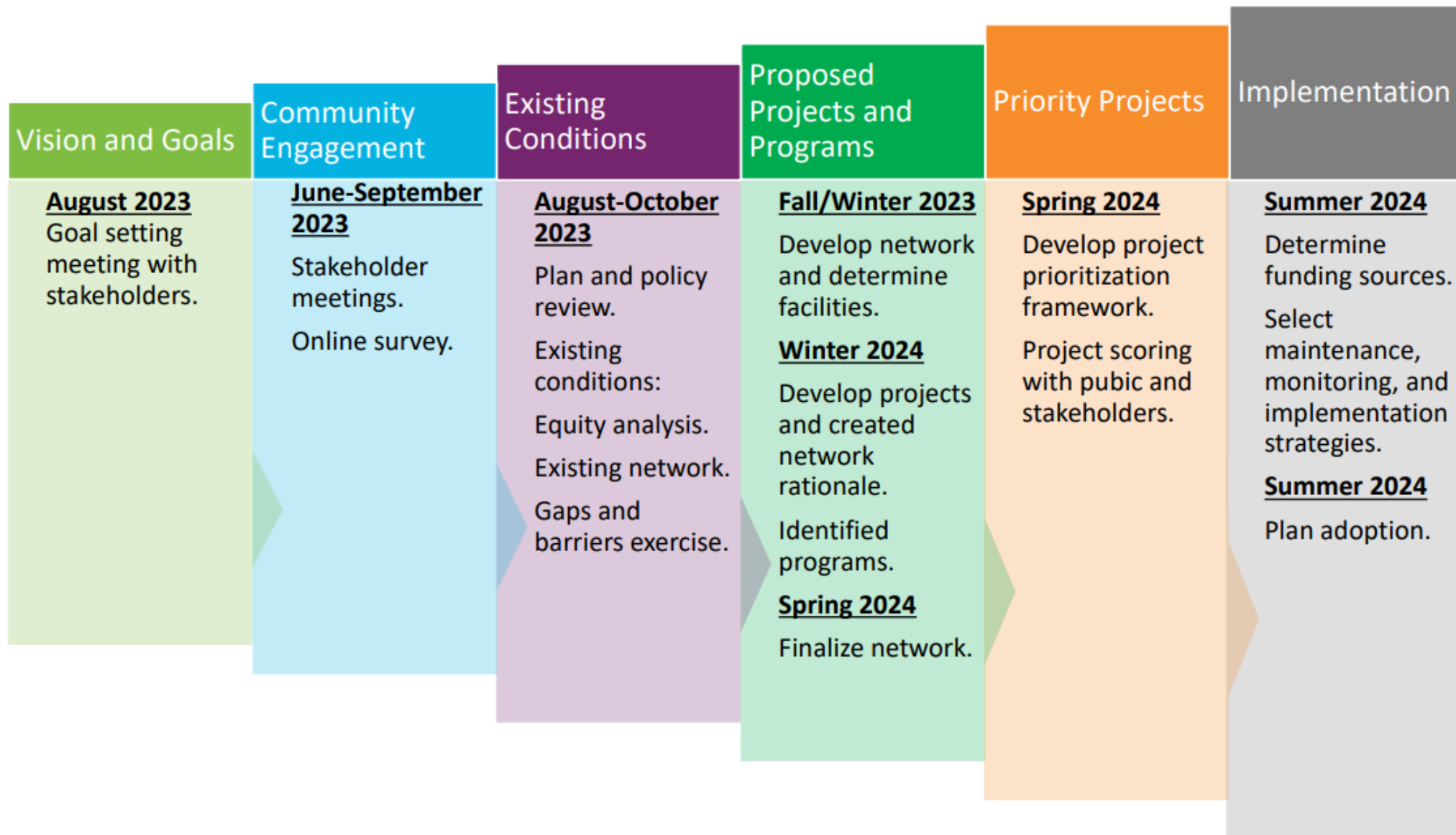
People walking, bicycling, using strollers, wheelchairs/ mobility devices, skateboarding, and rollerblading are engaged in active transportation.

Why do an active transportation plan?



- Drives economic development.
- Prepares your community for future projects and funding.
- Gives residents a choice to improve health.





Takeaways

- How do we make our village safely accessible for Active Transportation?
- What are our current destinations within the Village?
- What roadblocks exist?
- How do we work together to submit a plan for funding?

Takeaways

- How do we make the village safely accessible for Active Transportation?
 - Missing sections of sidewalk
 - Poor access across bridge north side of town
 - No access to ball fields
 - Faded and difficult to read street signs

Takeaways

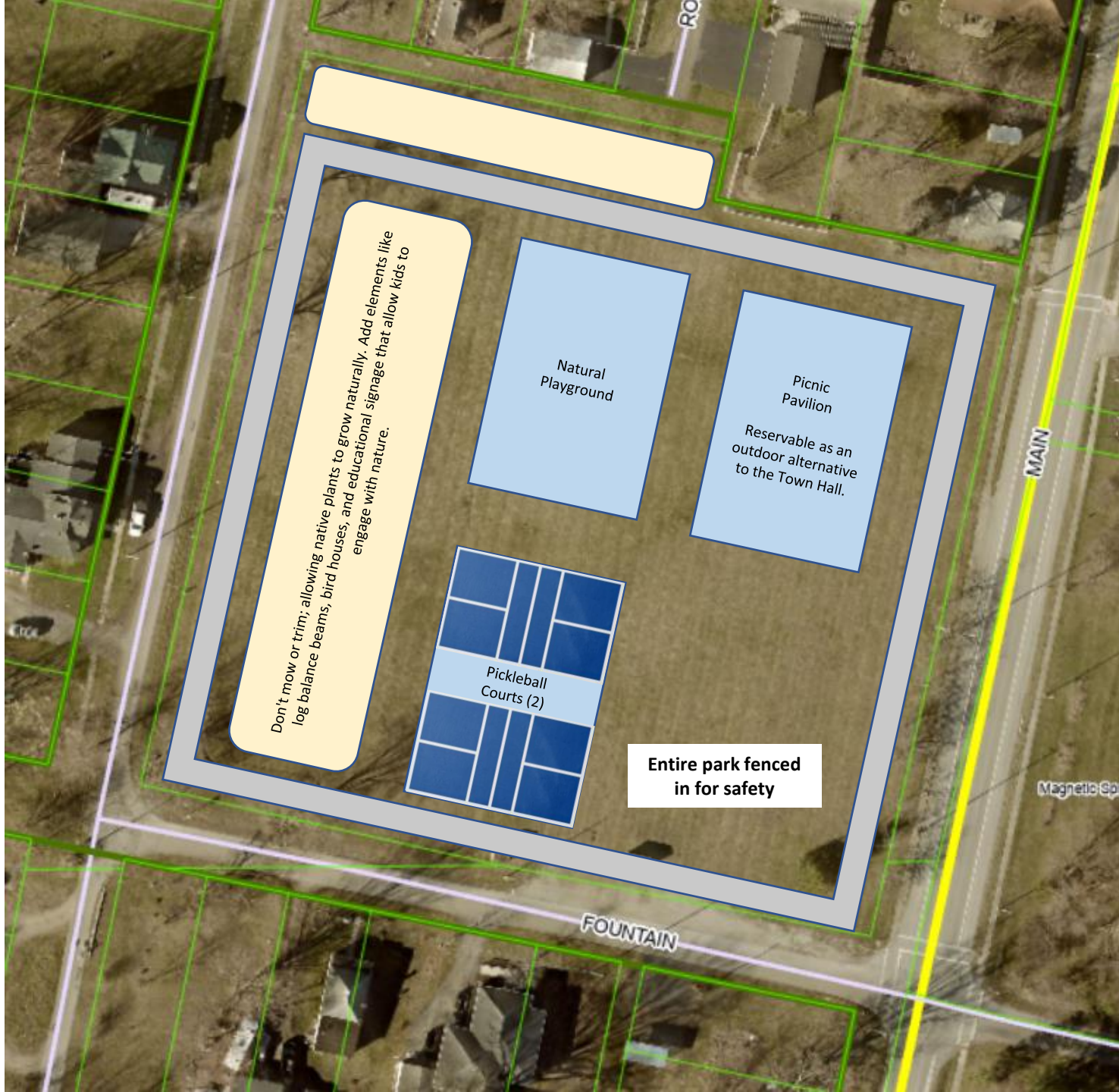
- What are our current destinations within the Village?
 - Post Office
 - Town Hall
 - Ball Fields
 - United Methodist Church

Takeaways

- What roadblocks exist?
 - Missing sidewalks
 - Old / unreadable street signs
 - Lack of destinations

Takeaways

- How do we work together to submit a plan for funding?
 - Tamisha Matus will work directly with us to join with Leesburg and Richwood for a comprehensive plan
 - The ideas are up to us!



Goals & Objectives

- Turn unused space into a destination
- Provide incentive for village growth
- Walkable access between village, park, and ball fields

Benefits

- Healthy outdoor exercise option
- Safe space for children to play
- Reduce amount of land requiring maintenance (mowing)
- Increased property values
- Public gathering place

Concerns

- Land not currently owned by Village
- Deed restrictions require educational use
- Village resident concerns?
- Parking
- Abuse (refuse, waste, soil, etc.)
- Security



Example of pavilions currently being installed in Ohio state parks

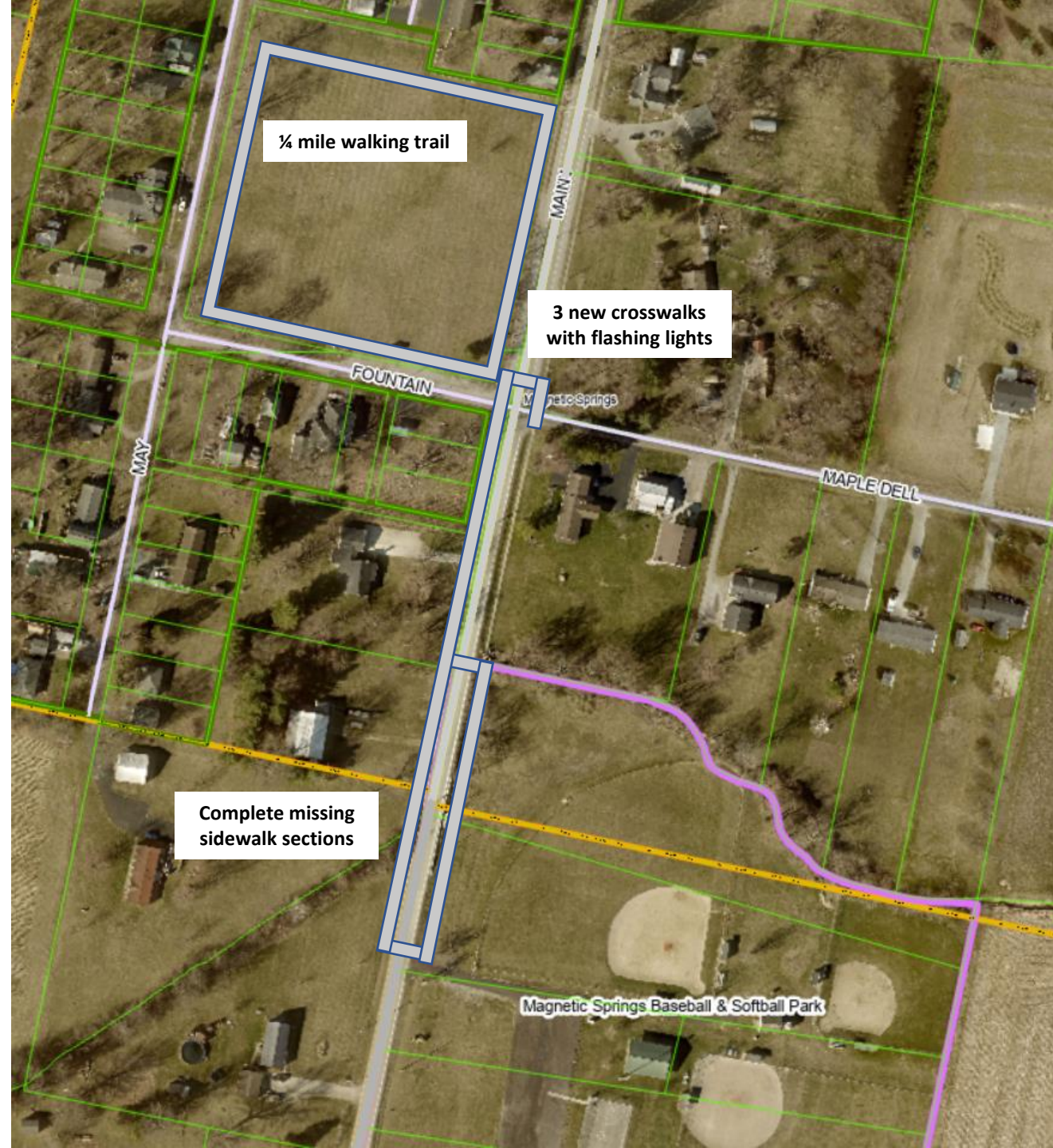


Natural playground concept – low maintenance, high benefit









1/4 mile walking trail

**3 new crosswalks
with flashing lights**

**Complete missing
sidewalk sections**

Magnetic Springs Baseball & Softball Park